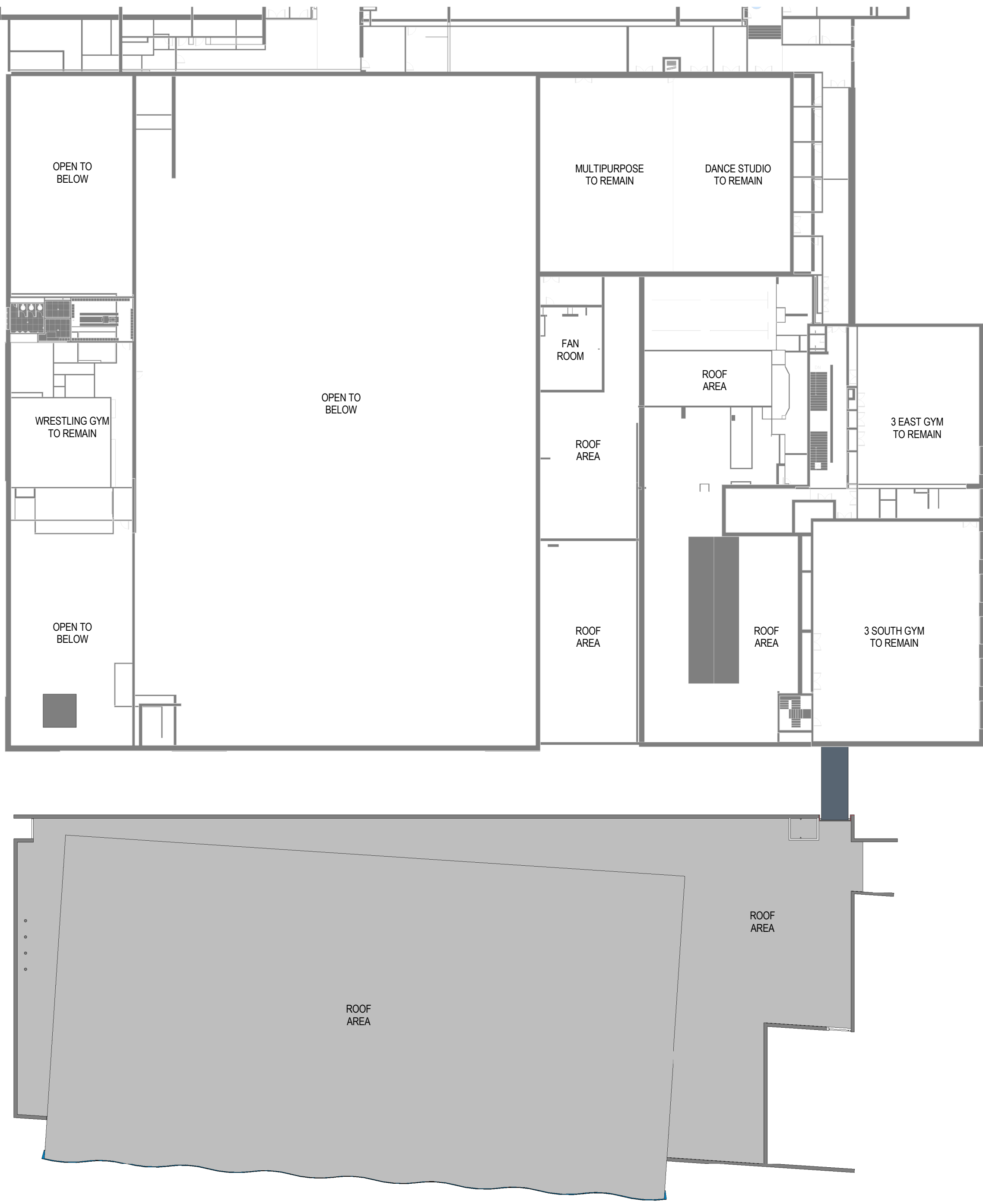


OPTION 1: 50-METER POOL, NO GARAGE



5 OPTION 1 - THIRD FLOOR PLAN
1" = 30'-0"

NATATORIUM PROGRAM COMPARISON				
SPACE	OPTION 1*	OPTION 2	OPTION 3	OPTION 4
COMPETITION POOL	75' X 170'	75' X 68'	75' X 68'	75' X 131'
WARMUP POOL	N/A	75' X 31'-9"	75' X 38'-6"	N/A
TOTAL AREA OF WATER	12,750 SF	7,482 SF	7,988 SF	9,925 SF
PARKING	OFF SITE	EXISTING GARAGE = 300 STALLS	NEW 4 LEVEL GARAGE = 331 STALLS	NEW 4 LEVEL GARAGE = 331 STALLS
MENS LOCKER ROOMS	2300 SF	2075 SF	2175 SF	2300 SF
WOMENS LOCKER ROOMS	2300 SF	2075 SF	2175 SF	2300 SF
COACHES LOCKER/OFFICE	1300 SF	1350 SF	1300 SF	1300 SF
SCOREKEEPER	150 SF	150 SF	150 SF	150 SF
STORAGE	1000 SF	1000 SF	785 SF	1000 SF
FAMILY CHANGING	750 SF	750 SF	750 SF	750 SF
DRYLAND	660 SF	600 SF	1080 SF	1200 SF
PUBLIC TOILET ROOMS	800 SF	800 SF	800 SF	800 SF
CONCESSIONS/SUPPORT	500 SF	500 SF	500 SF	500 SF
SEATING	2500 SF 450 SEATS	1470 SF +/- 300 SEATS	1670 SF +/- 325 SEATS	2375 SF +/- 400 SEATS
MECHANICAL	4000 SF	2025 SF	3285 SF	2025 SF
CLASSROOM	1400 SF	1575 SF	1225 SF	1400 SF
SECURITY	300 SF	350 SF	300 SF	N/A

* APPROVED PLAN

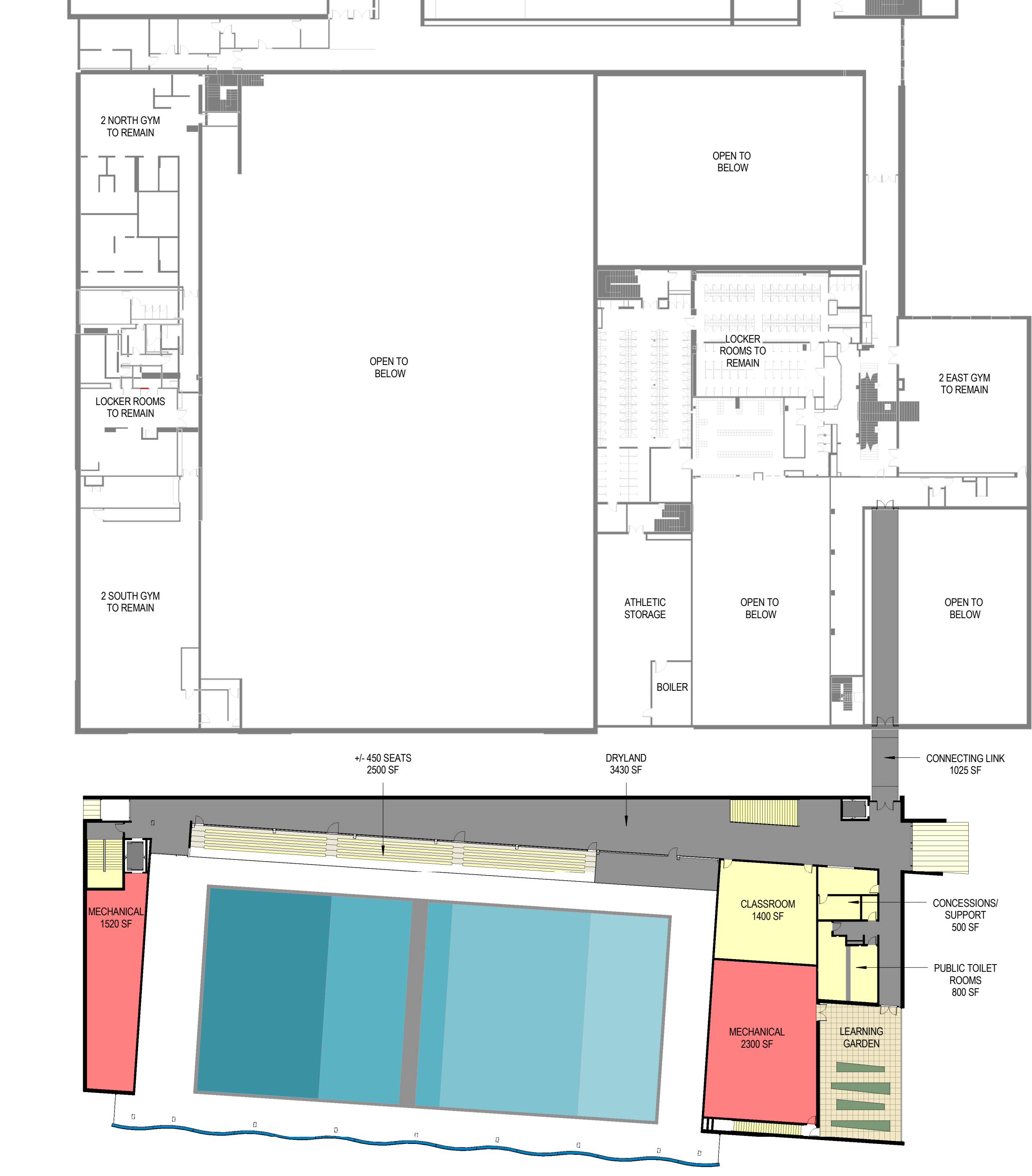


Oak Park and River Forest
High School

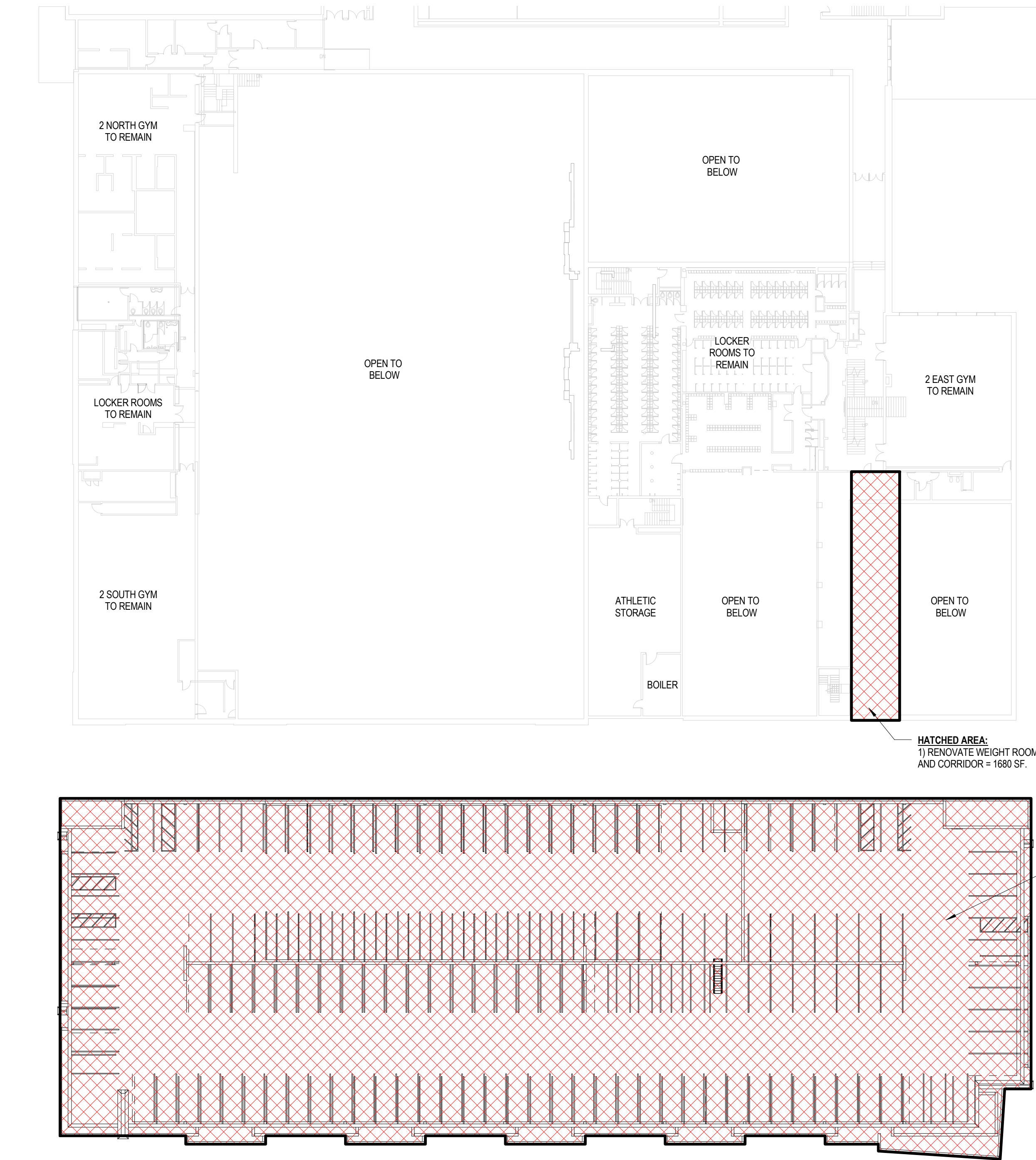
APRIL 2016

LEGATARCHITECTS

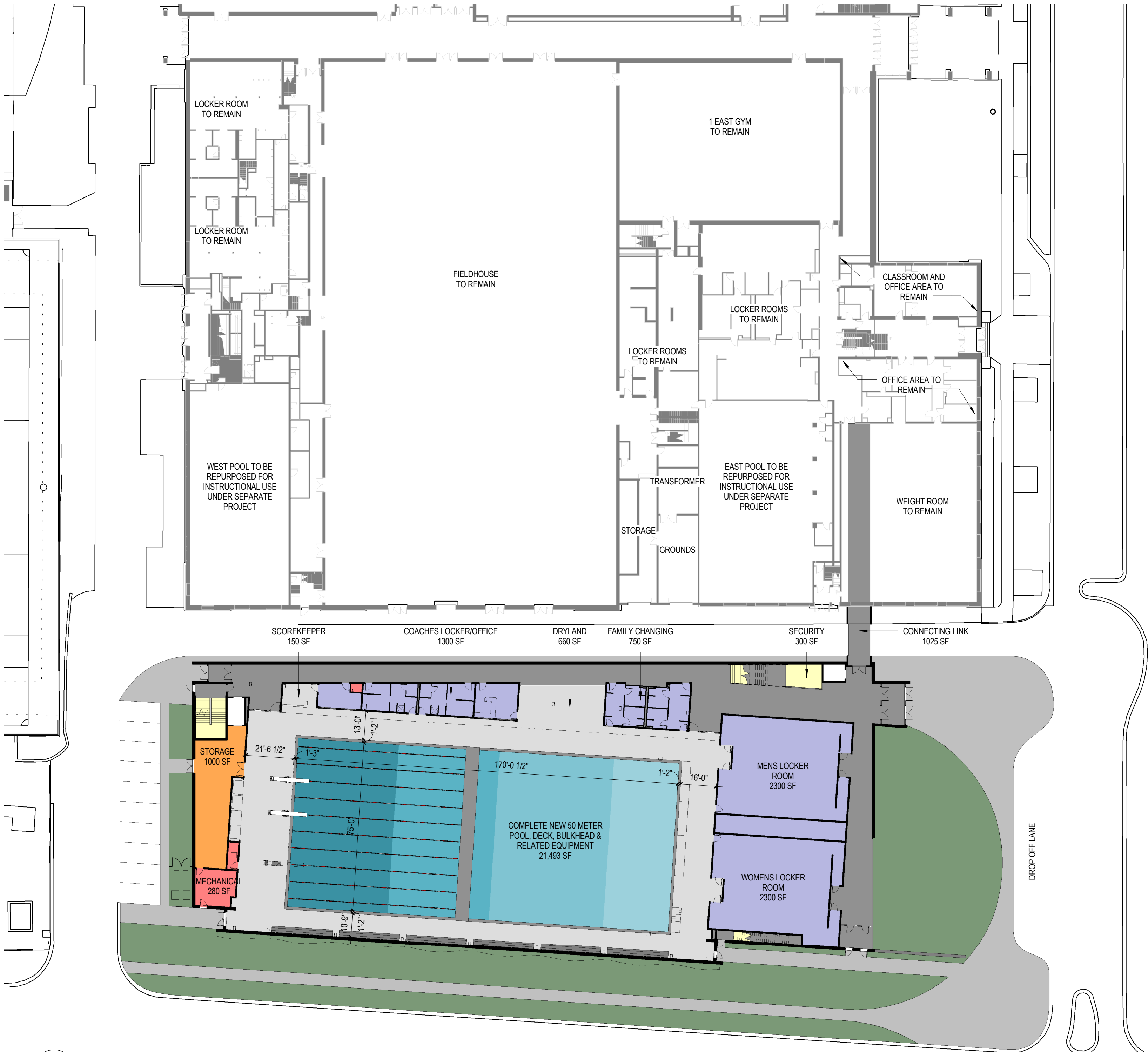
SUSTAINABILITY | PERFORMANCE | DESIGN



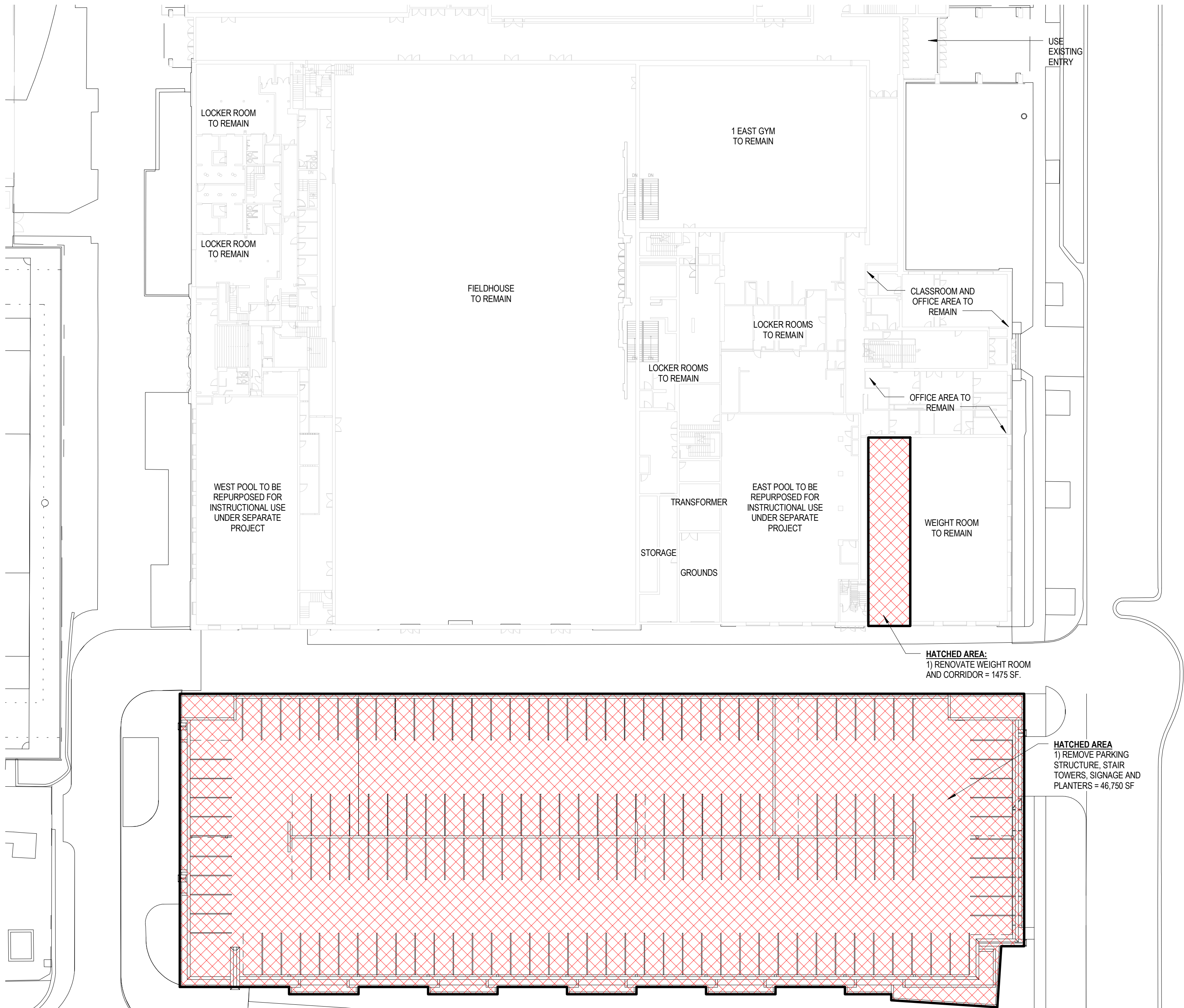
4 OPTION 1 - SECOND FLOOR PLAN
1" = 30'-0"



2 EXISTING - SECOND FLOOR PLAN
1" = 30'-0"

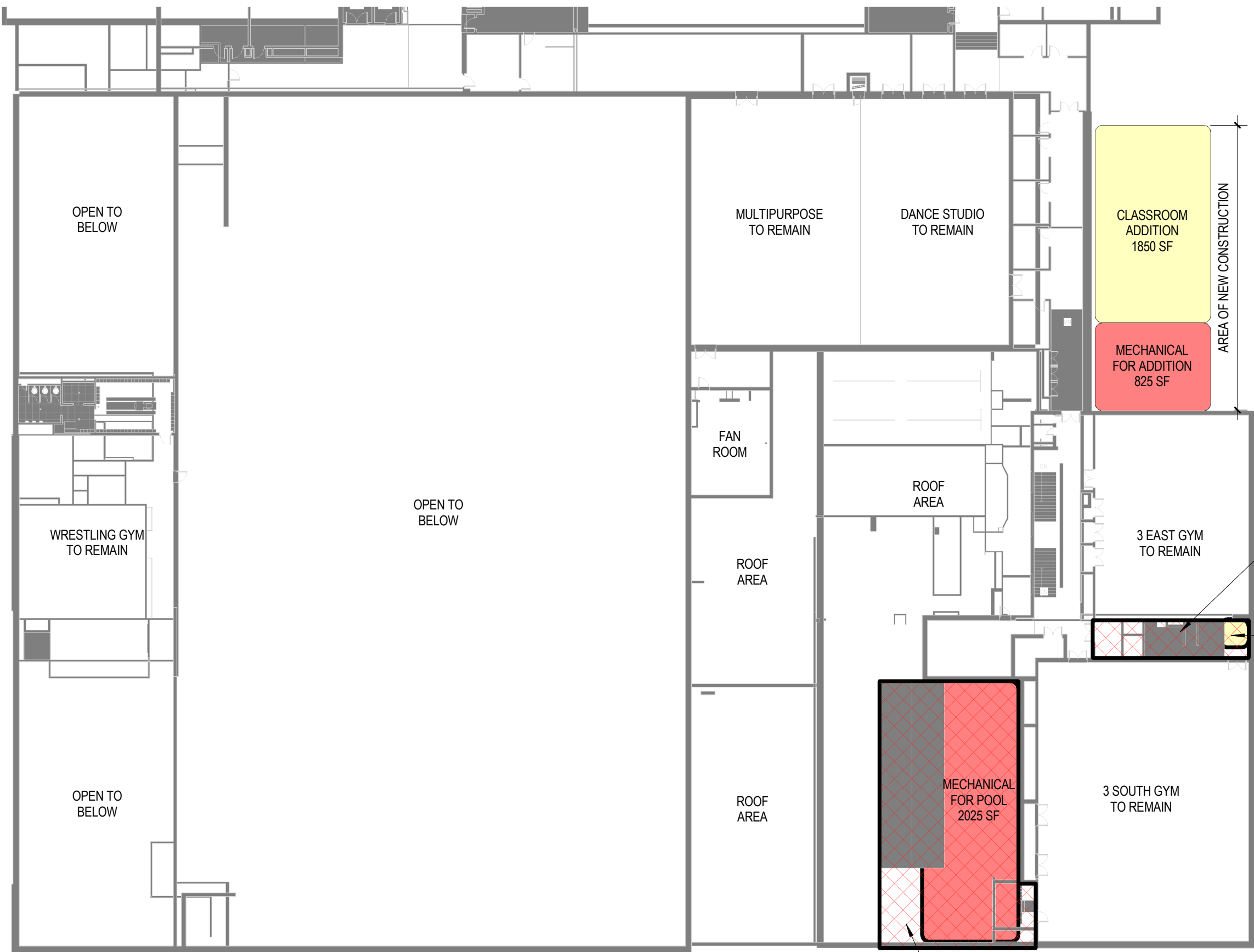


3 OPTION 1 - FIRST FLOOR PLAN
1" = 30'-0"



1 EXISTING - FIRST FLOOR PLAN
1" = 30'-0"

OPTION 2: RENOVATE EXISTING POOLS



5 OPTION 2 - THIRD FLOOR PLAN
1" = 30'-0"

NATATORIUM PROGRAM COMPARISON				
SPACE	OPTION 1*	OPTION 2	OPTION 3	OPTION 4
COMPETITION POOL	75' X 170'	75' X 68'	75' X 68'	75' X 131'
WARMUP POOL	NIL	75' X 31'-9"	75' X 38'-6"	NIL
TOTAL AREA OF WATER	12,750 SF	7482 SF	7988 SF	9825 SF
PARKING	OFF SITE	EXISTING GARAGE = 300 STALLS	NEW LEVEL GARAGE = 301 STALLS	NEW 4 LEVEL GARAGE = 301 STALLS
MENS LOCKER ROOMS	2300 SF	2075 SF	2175 SF	2300 SF
WOMENS LOCKER ROOMS	2300 SF	2075 SF	2175 SF	2300 SF
COACHES LOCKER/OFFICE	1300 SF	1350 SF	1300 SF	1300 SF
SCOREKEEPER	150 SF	150 SF	150 SF	150 SF
STORAGE	1000 SF	1000 SF	785 SF	1000 SF
FAMILY CHANGING	750 SF	750 SF	750 SF	750 SF
DRYLAND	660 SF	600 SF	1080 SF	1200 SF
PUBLIC TOILET ROOMS	800 SF	800 SF	800 SF	800 SF
CONCESSIONS/SUPPORT	500 SF	500 SF	500 SF	500 SF
SEATING	2500 SF 400 SEATS	1470 SF 400 SEATS	1670 SF 400 SEATS	2375 SF 400 SEATS
MECHANICAL	4000 SF	2025 SF	3285 SF	2025 SF
CLASSROOM	1400 SF	1575 SF	1225 SF	1400 SF
SECURITY	300 SF	350 SF	300 SF	NIL

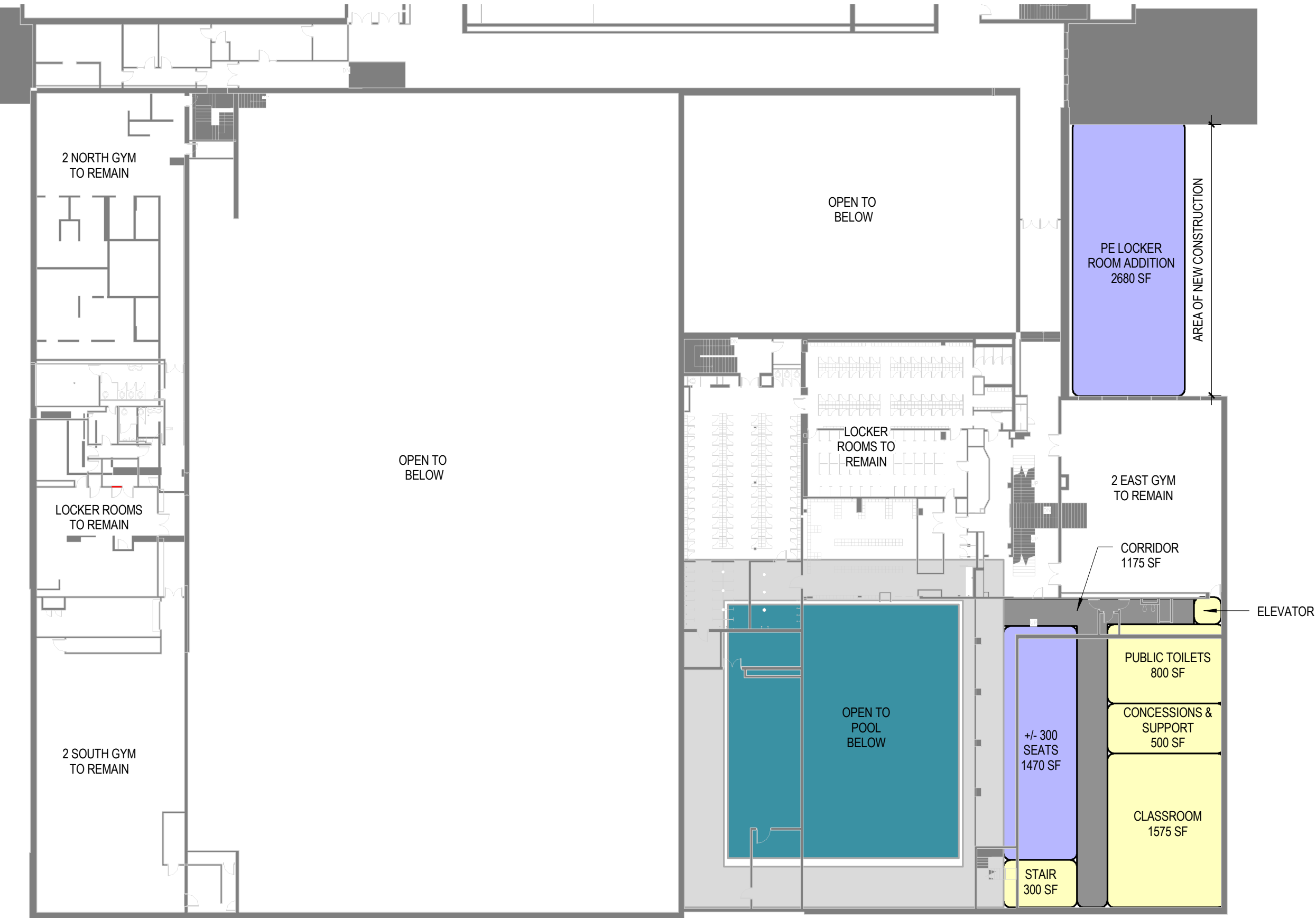
* APPROVED PLAN

OPTION 2 - BUILDING NET GAINS

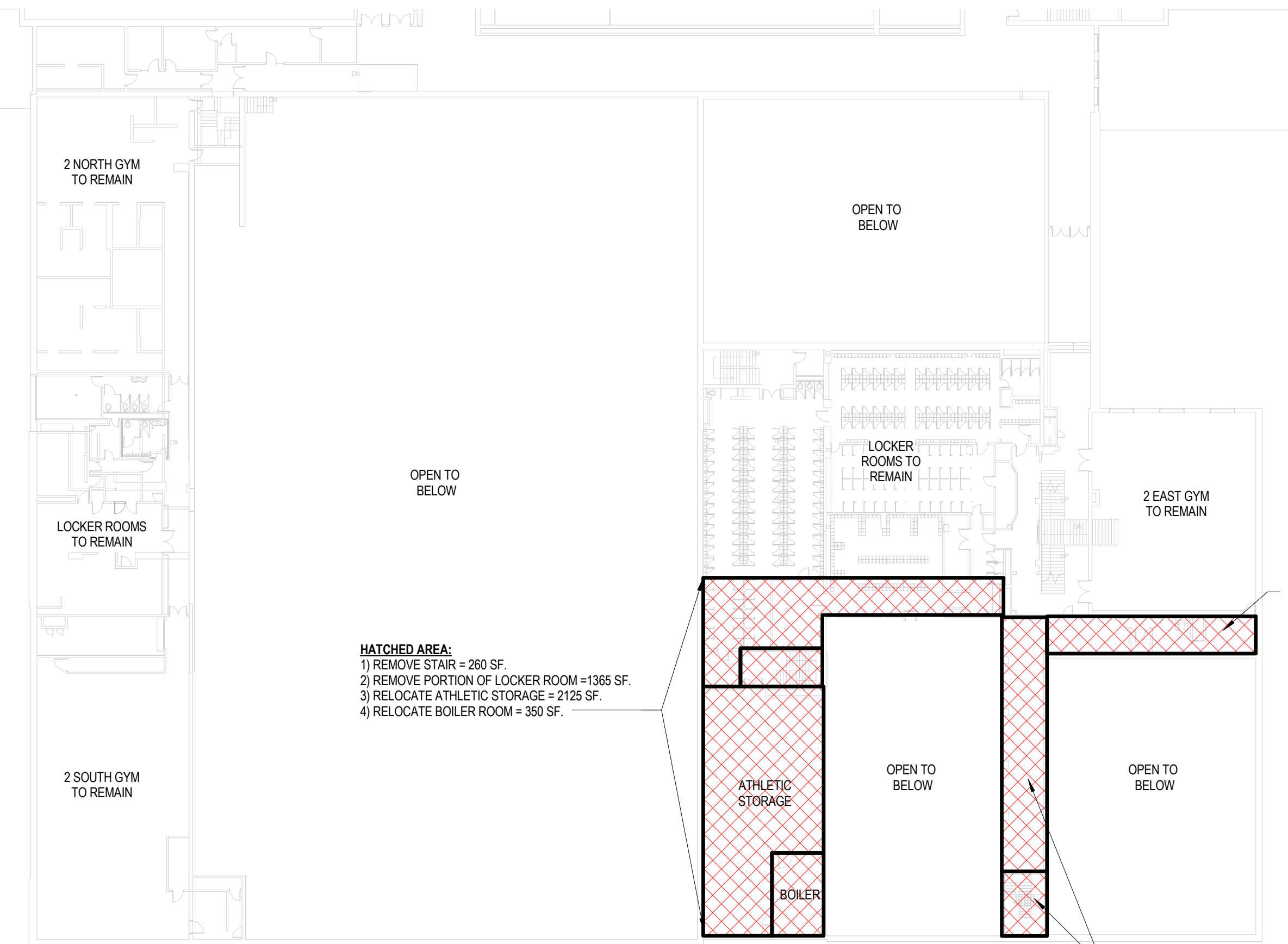
- LOWER LEVEL**
- NEW MECHANICAL SPACE FOR TRANSFORMER AND BOILER = 2680 SF.
- FIRST FLOOR**
- NEW PE & ATHLETIC DEPARTMENT OFFICES, AREA INCREASED BY 790 SF.
- SECOND FLOOR**
- NEW PE LOCKER ROOM SPACE = 2680 SF.
- THIRD FLOOR**
- NEW MECHANICAL ROOFTOP ENCLOSURE FOR POOL AHU AND NEW ADDITION AHU = 2850 SF.
 - ELEVATOR ACCESS FOR 3 SOUTH & 3 EAST GYMS.
 - NEW CLASSROOM SPACE = 1850 SF.

OPTION 2 - BUILDING NET LOSSES

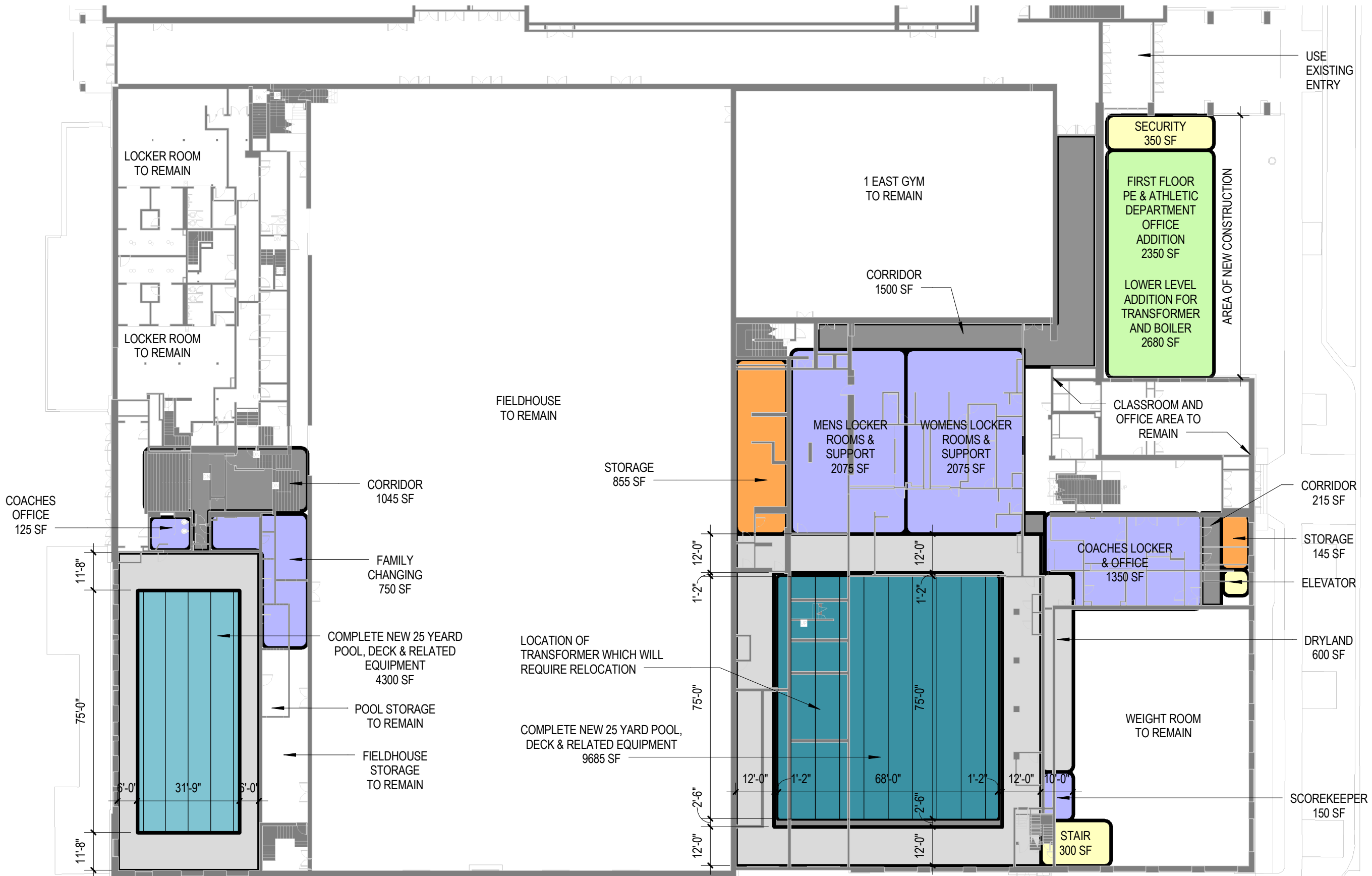
- FIRST FLOOR**
- 1 WEST POOL/FIELDHOUSE STORAGE REDUCED BY 840 SF.
 - LOCKER ROOMS OFF FIELDHOUSE WOULD NEED TO BE RELOCATED.
 - 12,000v SERVICE TRANSFORMER WOULD NEED TO BE RELOCATED, RELOCATION OF SERVICE WILL CAUSE DISRUPTION FOR SOUTH END OF SCHOOL.
 - OUTDOOR STORAGE SPACE ELIMINATED.
 - GROUNDS WOULD NEED TO BE RELOCATED.
 - WEIGHT ROOM REDUCED BY 870 SF.
- SECOND FLOOR**
- LOCKER ROOMS REDUCED BY 1365 SF.
 - ATHLETIC STORAGE WOULD NEED TO BE RELOCATED.
 - BOILER WOULD NEED TO BE RELOCATED.
 - 2 EAST GYM SUPPORT SPACES ELIMINATED.
- THIRD FLOOR**
- 3 EAST GYM REDUCED BY 475 SF.



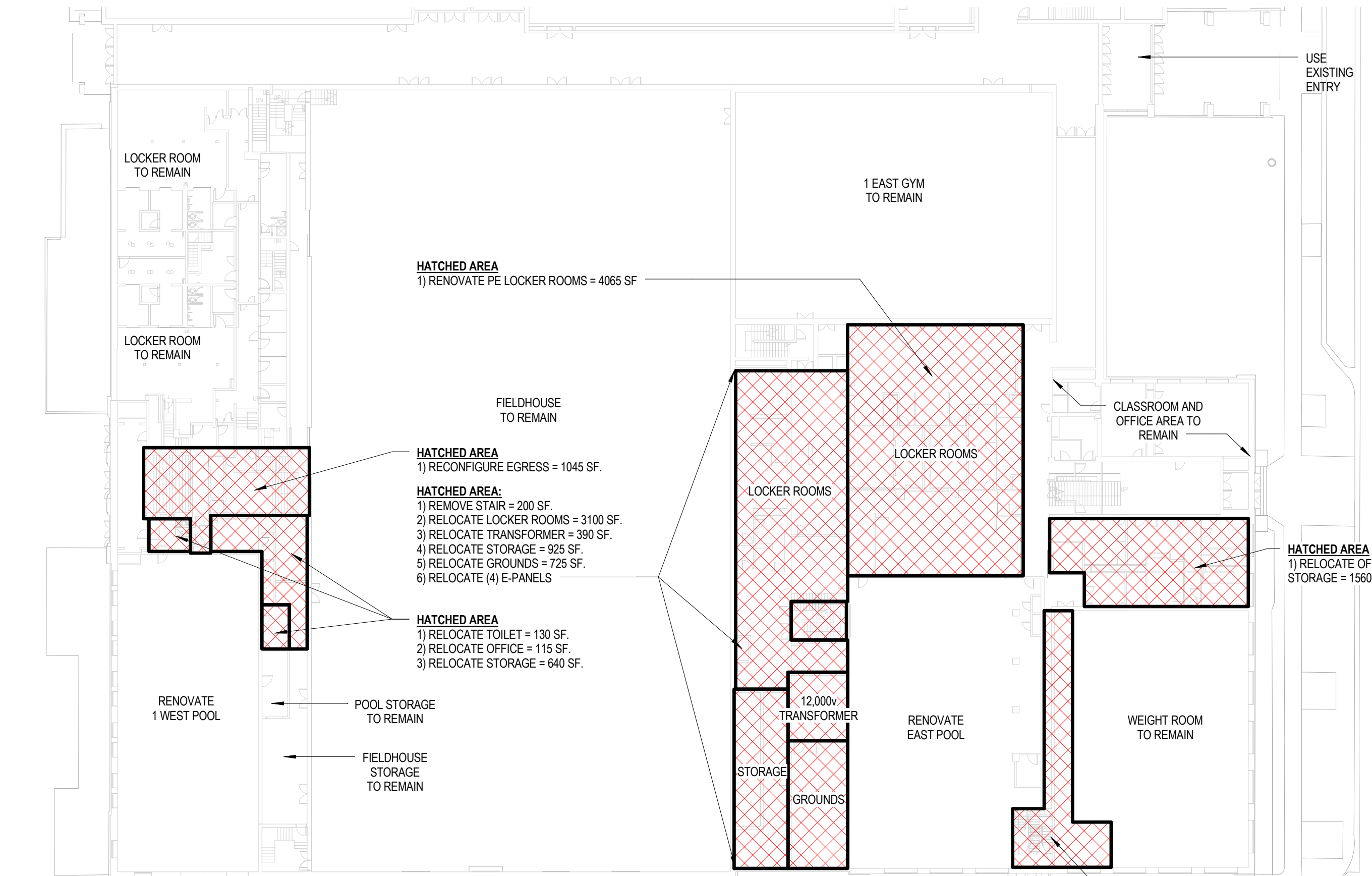
4 OPTION 2 - SECOND FLOOR PLAN
1" = 30'-0"



2 EXISTING - SECOND FLOOR PLAN
1" = 30'-0"

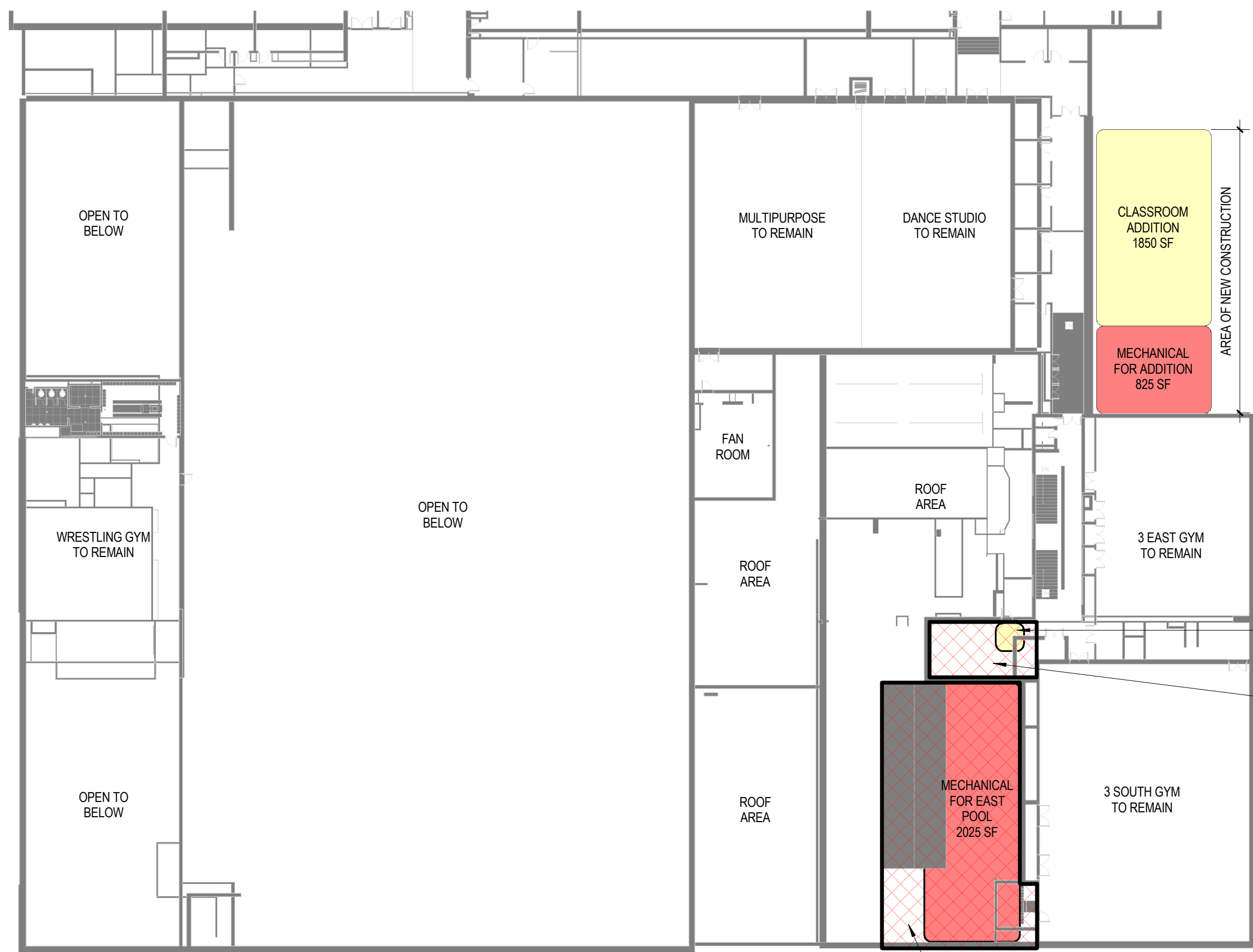


3 OPTION 2 - FIRST FLOOR PLAN
1" = 30'-0"



1 EXISTING - FIRST FLOOR PLAN
1" = 30'-0"

OPTION 3: RENOVATE ONE, BUILD ONE WITH NEW GARAGE



5 OPTION 3 - THIRD FLOOR PLAN
1" = 3/4"

NATATORIUM PROGRAM COMPARISON				
SPACE	OPTION 1*	OPTION 2	OPTION 3	OPTION 4
COMPETITION POOL	75' X 170'	75' X 68'	75' X 68'	75' X 131'
WARMUP POOL	NIL	75' X 31'-9"	75' X 38'-6"	NIL
TOTAL AREA OF WATER	12,750 SF	7482 SF	7988 SF	9825 SF
PARKING	OFF SITE	EXISTING GARAGE = 300 STALLS	NEW LEVEL GARAGE = 301 STALLS	NEW 4 LEVEL GARAGE = 301 STALLS
MENS LOCKER ROOMS	2300 SF	2075 SF	2175 SF	2300 SF
WOMENS LOCKER ROOMS	2300 SF	2075 SF	2175 SF	2300 SF
COACHES LOCKER/OFFICE	1300 SF	1350 SF	1300 SF	1300 SF
SCOREKEEPER	150 SF	150 SF	150 SF	150 SF
STORAGE	1000 SF	1000 SF	785 SF	1000 SF
FAMILY CHANGING	750 SF	750 SF	750 SF	750 SF
DRYLAND	660 SF	600 SF	1080 SF	1200 SF
PUBLIC TOILET ROOMS	800 SF	800 SF	800 SF	800 SF
CONCESSIONS/SUPPORT	500 SF	500 SF	500 SF	500 SF
SEATING	2500 SF 450 SEATS	1470 SF 400 SEATS	1670 SF 400 SEATS	2375 SF 400 SEATS
MECHANICAL	4000 SF	2025 SF	3285 SF	2025 SF
CLASSROOM	1400 SF	1575 SF	1225 SF	1400 SF
SECURITY	300 SF	350 SF	300 SF	NIL

* APPROVED PLAN

OPTION 3 - BUILDING NET GAINS

LOWER LEVEL

- 1. NEW MECHANICAL OR STORAGE SPACE = 2680 SF.

FIRST FLOOR

- 1. NEW PE & ATHLETIC DEPARTMENT OFFICES, AREA INCREASED BY 790 SF.
- 2. NEW COMPETITION POOL ADDITION.
- 3. NEW PARKING STRUCTURE.
- 4. FIELDHOUSE STORAGE INCREASED BY 725 SF.

SECOND FLOOR

- 1. NEW PE LOCKER ROOM SPACE = 2265 SF.
- 2. NEW CLASSROOM SPACE = 2680 SF.

THIRD FLOOR

- 1. NEW MECHANICAL ROOFTOP ENCLOSURE FOR POOL AHU AND NEW ADDITION AHU = 2850 SF.
- 2. ELEVATOR ACCESS FOR 3 SOUTH & 3 EAST GYMS.
- 3. NEW CLASSROOM SPACE = 1850 SF.

OPTION 3 - BUILDING NET LOSSES

FIRST FLOOR

- 1. PORTION OF PE LOCKER ROOM WOULD NEED TO BE RELOCATED = 1452 SF.
- 2. GROUNDS WOULD NEED TO BE RELOCATED.
- 3. ALLEY ACCESS FROM SCOVILLE WILL BE ELIMINATED.
- 4. FIELDHOUSE STORAGE REDUCED BY 1250 SF.

SECOND FLOOR

- 1. 2 EAST GYM SUPPORT SPACES ELIMINATED.

THIRD FLOOR

- 1. EXISTING MECHANICAL SPACE AND AHU WOULD NEED TO BE MODIFIED FOR ELEVATOR.



Oak Park and River Forest
High School

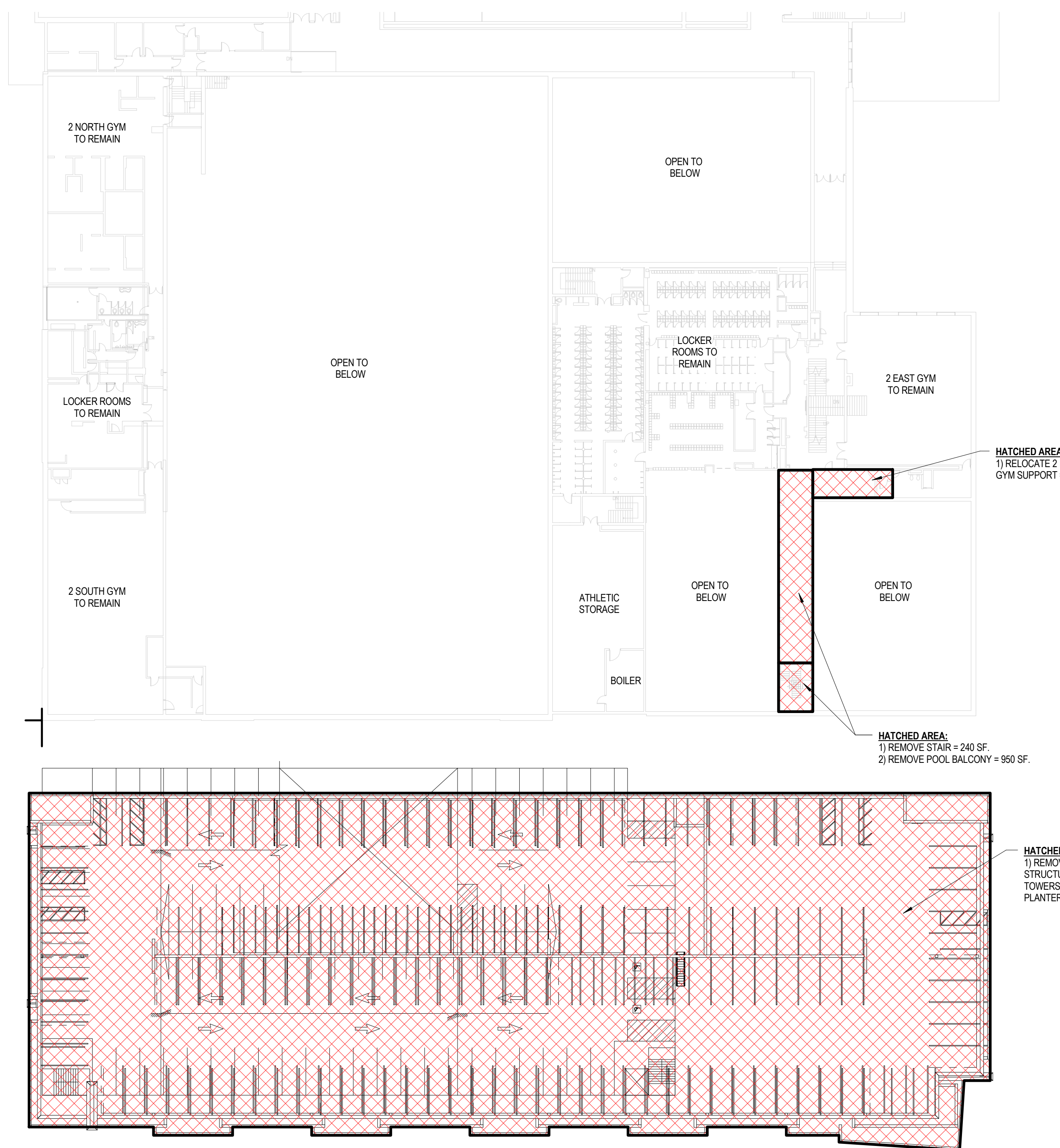
APRIL 2016

LEGATARCHITECTS

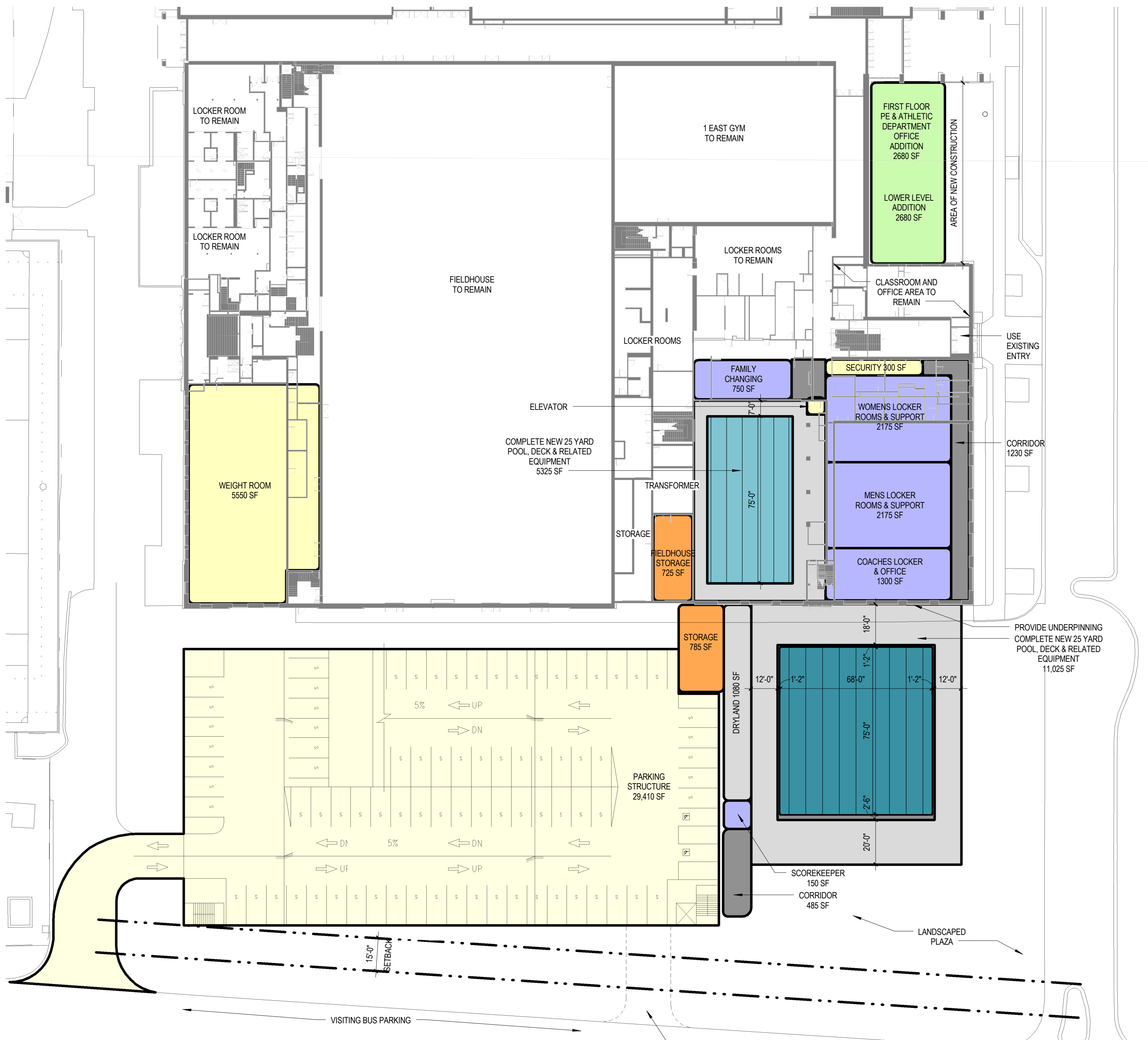
SUSTAINABILITY | PERFORMANCE | DESIGN



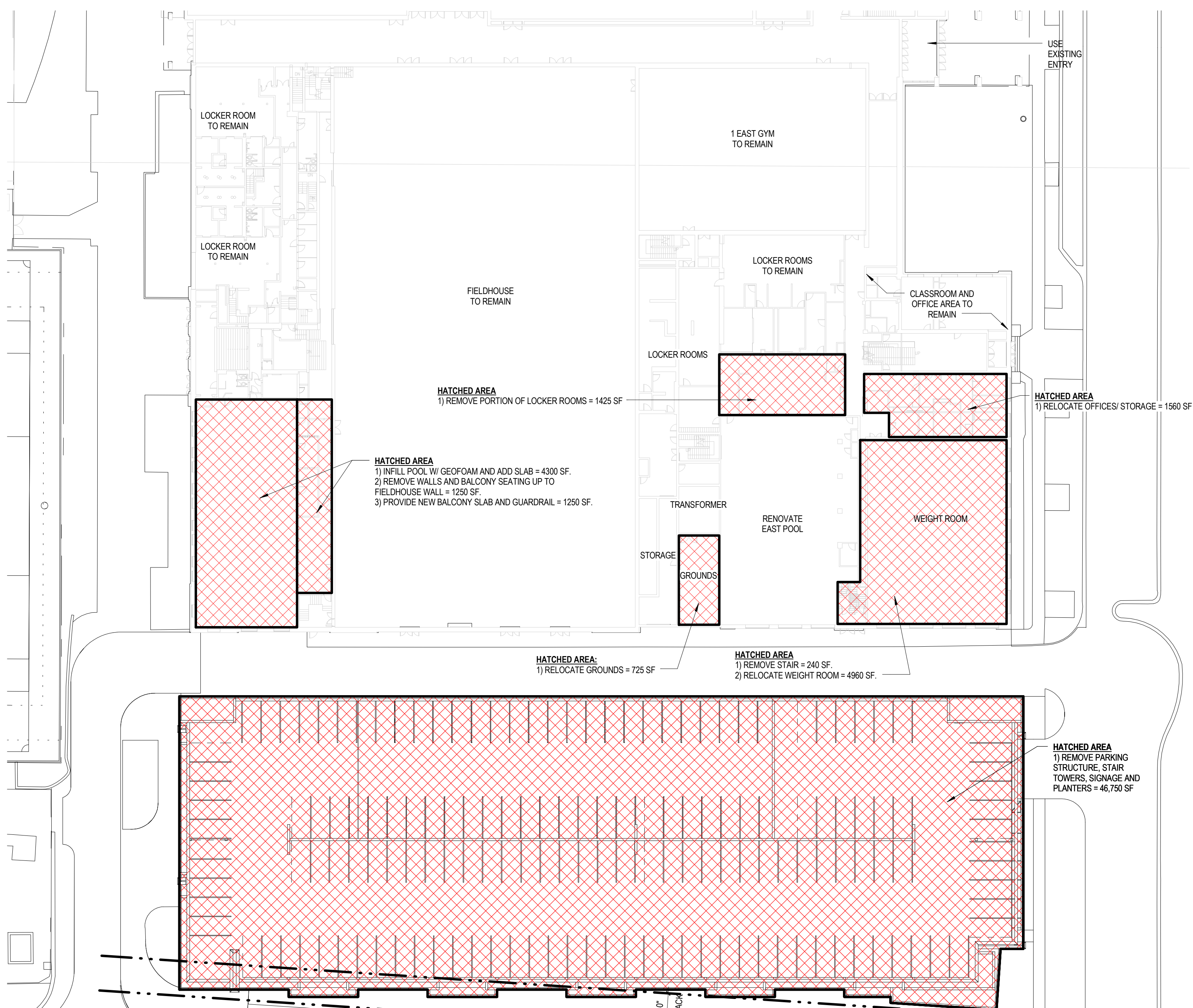
4 OPTION 3 - SECOND FLOOR PLAN
1" = 3/4"



2 EXISTING - SECOND FLOOR PLAN
1" = 3/4"

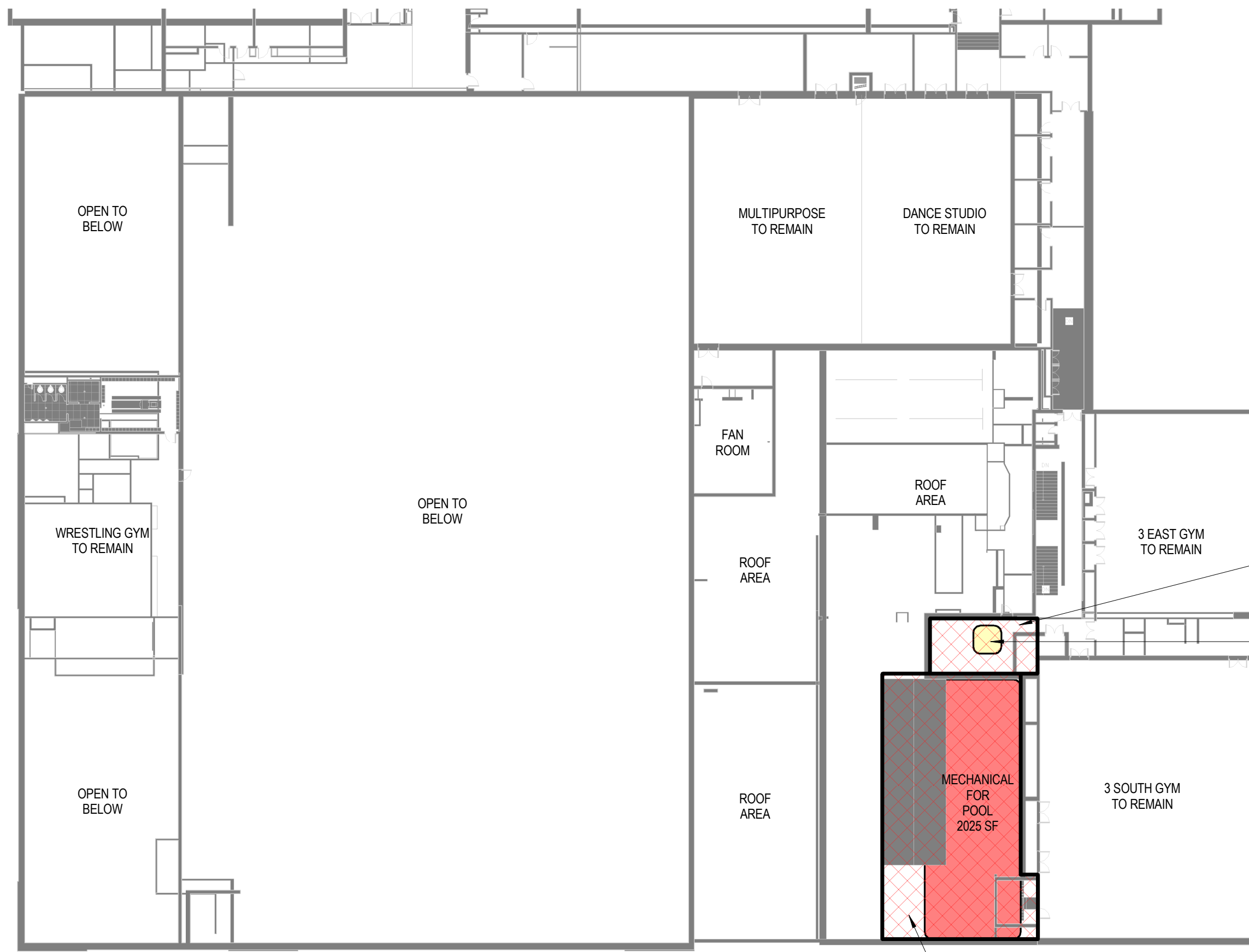


3 OPTION 3 - FIRST FLOOR PLAN
1" = 3/4"



1 EXISTING - FIRST FLOOR PLAN
1" = 3/4"

OPTION 4: 40-METER POOL WITH NEW GARAGE



5 OPTION 4 - THIRD FLOOR PLAN
1" = 30'-0"

NATATORIUM PROGRAM COMPARISON				
SPACE	OPTION 1*	OPTION 2	OPTION 3	OPTION 4
COMPETITION POOL	75' X 170'	75' X 68'	75' X 68'	75' X 131'
WARMUP POOL	N/A	75' X 31'-9"	75' X 38'-6"	N/A
TOTAL AREA OF WATER	12,750 SF	7482 SF	7988 SF	9825 SF
PARKING OFF SITE		EXISTING GARAGE = 300 STALLS	NEW LEVEL GARAGE = 301 STALLS	NEW 4 LEVEL GARAGE = 301 STALLS
MENS LOCKER ROOMS	2300 SF	2075 SF	2175 SF	2300 SF
WOMENS LOCKER ROOMS	2300 SF	2075 SF	2175 SF	2300 SF
COACHES LOCKER/OFFICE	1300 SF	1350 SF	1300 SF	1300 SF
SCOREKEEPER	150 SF	150 SF	150 SF	150 SF
STORAGE	1000 SF	1000 SF	785 SF	1000 SF
FAMILY CHANGING	750 SF	750 SF	750 SF	750 SF
DRYLAND	660 SF	600 SF	1080 SF	1200 SF
PUBLIC TOILET ROOMS	800 SF	800 SF	800 SF	800 SF
CONCESSIONS/SUPPORT	500 SF	500 SF	500 SF	500 SF
SEATING	2500 SF 480 SEATS	1470 SF 430 SEATS	1670 SF 430 SEATS	2375 SF 440 SEATS
MECHANICAL	4000 SF	2025 SF	3285 SF	2025 SF
CLASSROOM	1400 SF	1575 SF	1225 SF	1400 SF
SECURITY	300 SF	350 SF	300 SF	N/A

* APPROVED PLAN

OPTION 4 - BUILDING NET GAINS

FIRST FLOOR

1. NEW COMPETITION STRETCH POOL ADDITION.
2. NEW PARKING STRUCTURE.
3. NEW CLASSROOM SPACE = 2350 SF.

SECOND FLOOR

1. NEW CLASSROOM SPACE = 6125 SF.

THIRD FLOOR

1. NEW MECHANICAL ROOFTOP ENCLOSURE FOR POOL AHU = 2025 SF.
2. ELEVATOR ACCESS FOR 3 SOUTH & 3 EAST GYMS.

OPTION 4 - BUILDING NET LOSSES

FIRST FLOOR

1. ALLEY ACCESS FROM SCOVILLE WILL BE ELIMINATED.
2. FIELDHOUSE STORAGE REDUCED BY 1250 SF.

SECOND FLOOR

1. 2 EAST GYM SUPPORT SPACES ELIMINATED.

THIRD FLOOR

1. EXISTING MECHANICAL SPACE AND AHU WOULD NEED TO BE MODIFIED FOR ELEVATOR.



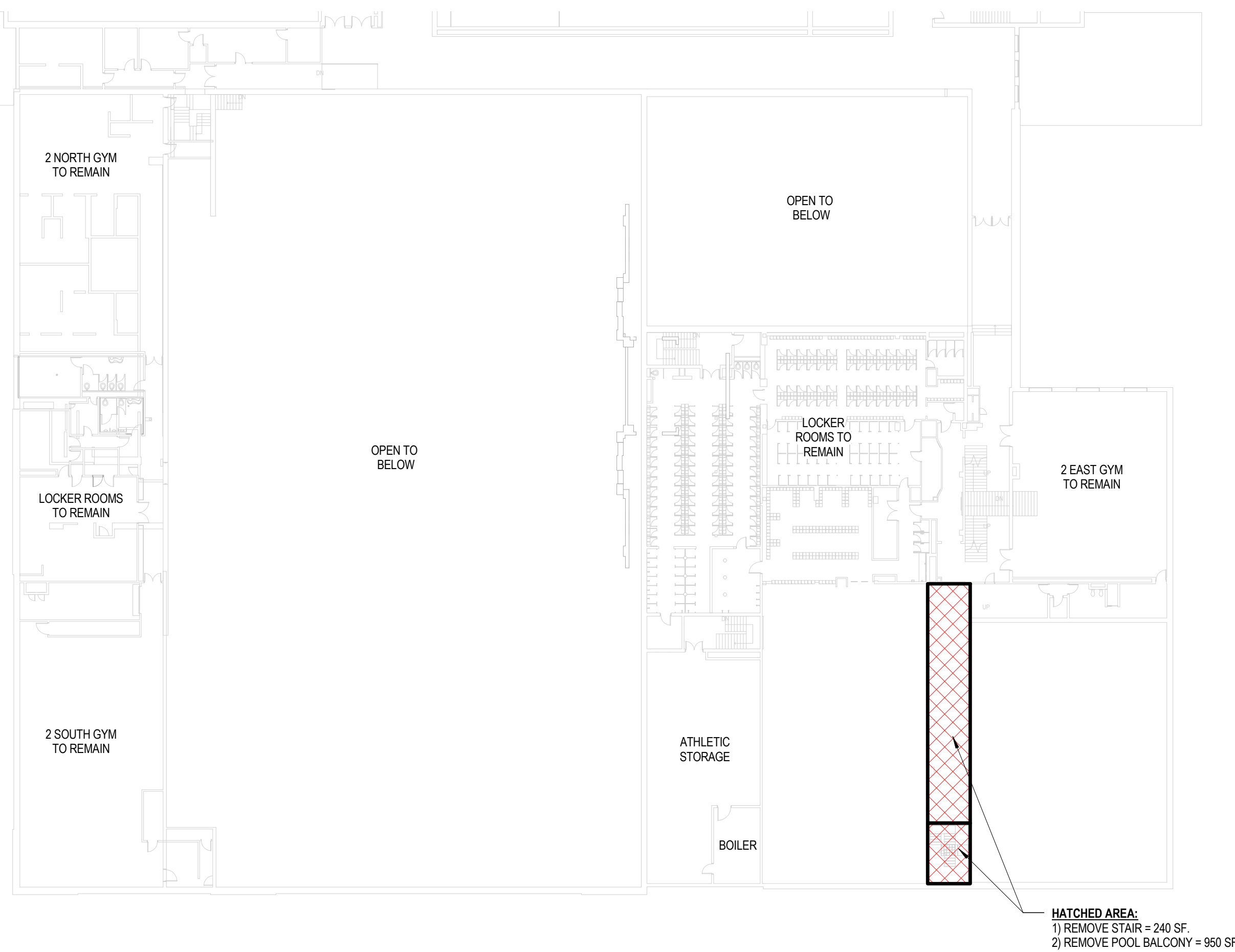
Oak Park and River Forest
High School
APRIL 2016

LEGATARCHITECTS

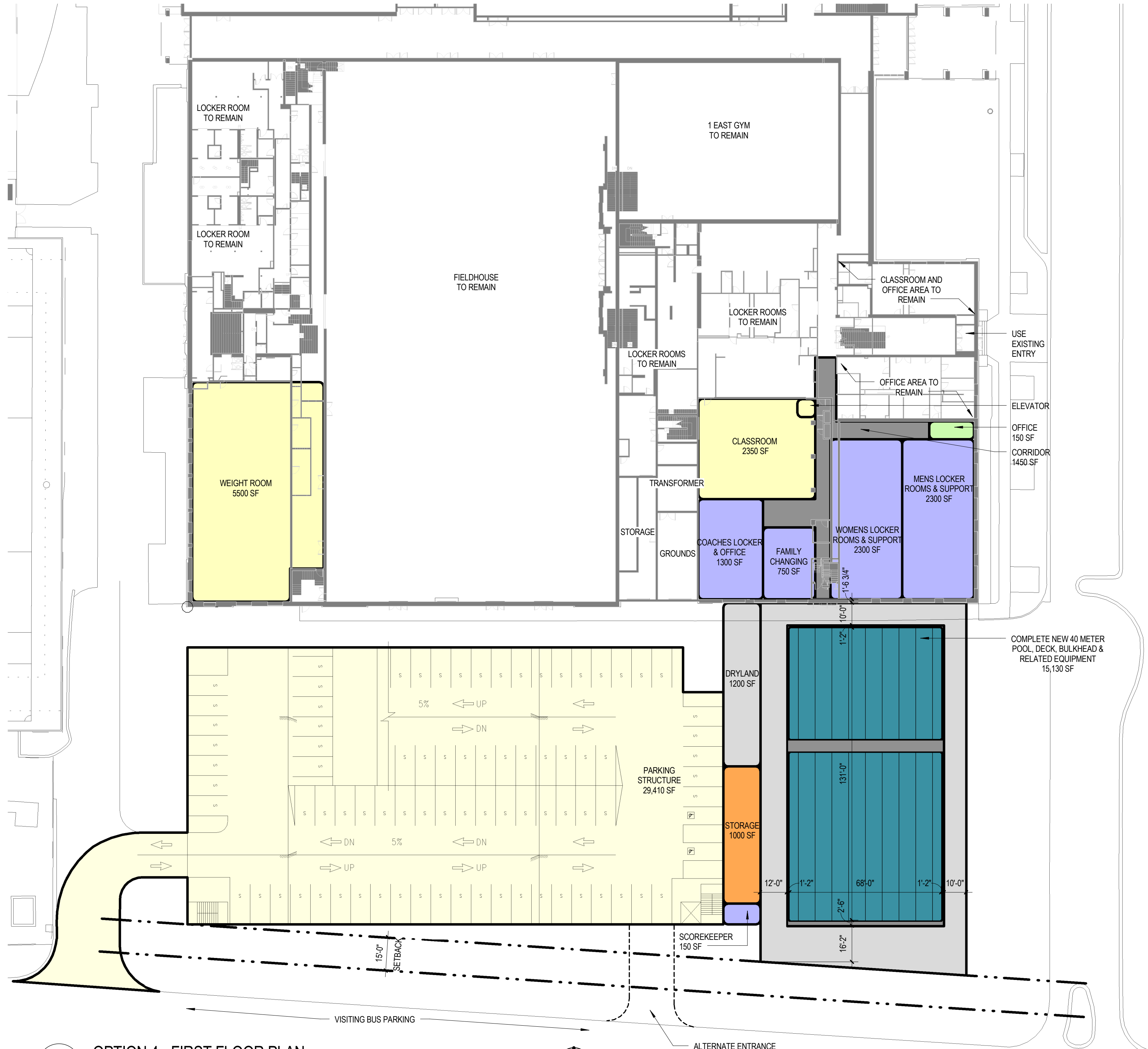
SUSTAINABILITY | PERFORMANCE | DESIGN



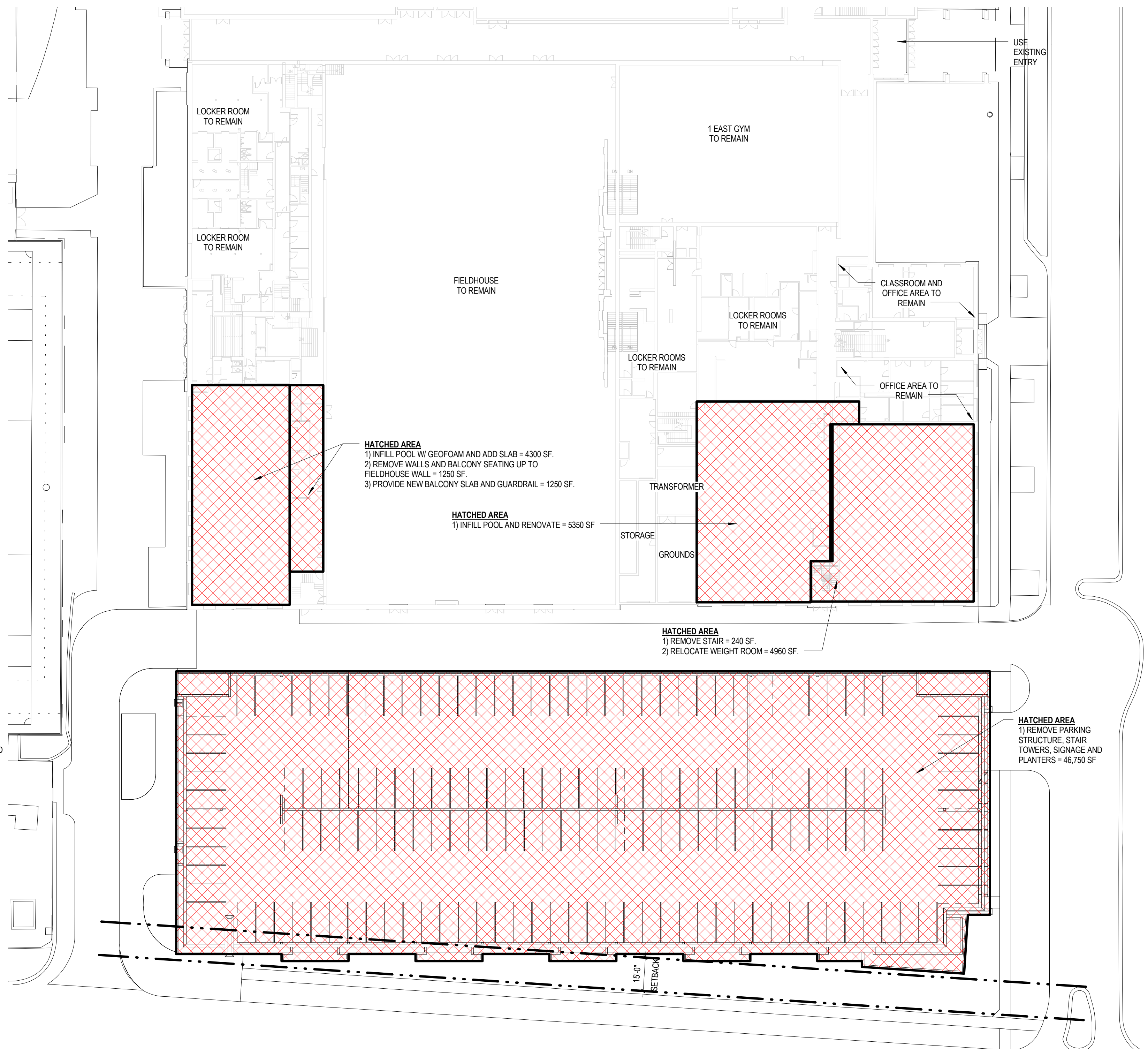
4 OPTION 4 - SECOND FLOOR PLAN
1" = 30'-0"



2 EXISTING - SECOND FLOOR PLAN
1" = 30'-0"



3 OPTION 4 - FIRST FLOOR PLAN
1" = 30'-0"



1 EXISTING - FIRST FLOOR PLAN
1" = 30'-0"